

Profile (As of March 31, 2023)

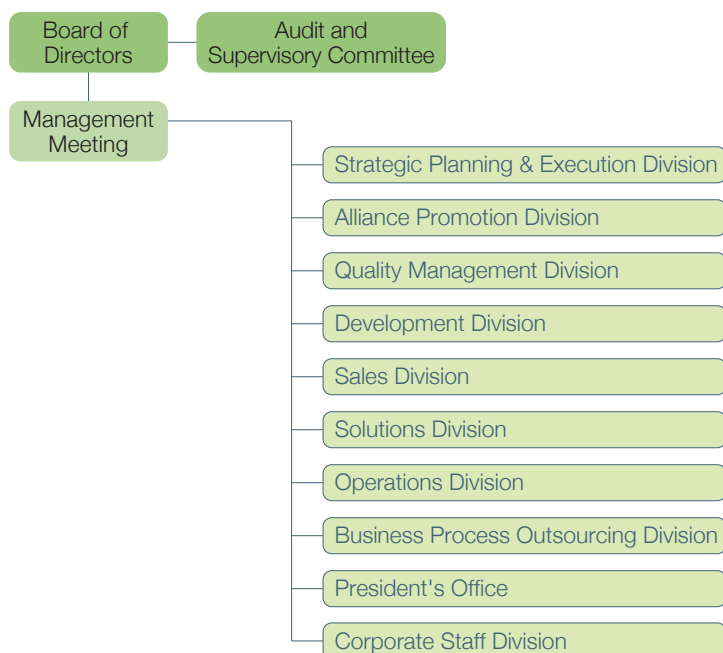
Company Name	INES Corporation
Date of establishment	July 28, 1964
Paid-in capital	¥15.0 billion
Number of employees	1,451
Total revenue	¥42.4 billion
Stock listing	Prime Market of the Tokyo Stock Exchange (Code: 9742)
URL	https://www.ines.co.jp/en/

Notes: Number of employees, total revenue, paid-in capital and total assets are consolidated figures.

Public Qualifications

- Information Security Management System (ISMS) : ISO 27001 certifications
- Quality Management Systems: ISO 9001 certification^{*1}
- IT Service Management System: ISO 20000 certification^{*2}
- Environmental Management System: ISO 14001 certification^{*3}
- Ministry of Economy, Trade and Industry
—System Auditing Corporate Ledger Registration
- Privacy Mark

Organization Chart (As of April 1, 2024)



Board of Directors (As of April 1, 2024)

President and Representative Director	Shuji Hattori
Representative Director and Senior Managing Executive Officer	Susumu Tsukahara
Director (Special Advisor)	Koichi Yoshimura Kazuhiro Fukuyama
Outside Director	Qun Jin Kanao Murakami Nobuyuki Sato Takashi Morisaki
Director who is an Audit and Supervisory Committee member	Kazumasa Otoshi
Outside Director who is an Audit and Supervisory Committee member	Kazuhiko Tomoda Ryo Haga Katsutoshi Hayafune
Managing Executive Officer	Nobuyuki Takeuchi Yuji Ono
Executive Officer	Koji Takada Reiko Suzuki Kenichi Oka Akira Yanagawa Shuji Nakamura Masatoshi Mihara Tatsuo Iwaki Motoaki Ito Satoshi Numazaki

^{*1} ISO 9001 certification registered organizations: Public Sector Solutions Division, Public Sector Operations Department (Organization name as of December 11, 2023)

^{*2} ISO 20000 registration scope: System Supervision Service(Server System and Network System Surveillance, Operation, System Failure, Operations for Housing, Hosting and Outsourcing) / certification registered organization: Operations Division, Management Department(Organizational name as of January 30, 2024)

^{*3} ISO 14001 registration scope:offices/branches (Head Office, Harumi Office, Yokohama Office, Kanto Service Center, Hokkaido Branch, Tohoku Branch, Chubu Branch, Shizuoka Office, Kansai Branch, Chugoku Branch, Kyushu Branch)(As of December 21, 2021)

History

- 1964** • Separated from Kyoei Life Insurance Company and incorporated under the name of Kyoei Computer Center (currently The Gibraltar Life Insurance Co., Ltd.)
- 1968** • Developed a resident information system for local government entities
- 1973** • Entrusted with the Ministry of Finance's operations management system
- 1974** • Contracted to carry out cash dispenser service center business for sogo (mutual loan and savings) banks
- 1983** • Constructed KICNET, a network connecting 68 principal cities in Japan
- 1984** • Changed the company name to INES Corporation
- 1987** • Listed on the Second Section of the Tokyo Stock Exchange
- 1990** • Upgraded to the First Section of the Tokyo Stock Exchange
- 1991** • Established the Advanced Research Center in Yokohama (currently Yokohama Office)
- 1992** • Began research using the JUNET international electronic mail system, which formed the basis of Japanese Internet with Waseda University
- 1996** • Launched the GoodParStrength operations management system
- 2000** • Announced the WebRings Web-based integrated administrative information system for local government entities
 - Began full outsourcing services for an insurance company
- 2006** • Launched an integrated insurance service system for small-amount short-term insurance providers
- 2007** • Launched InsAsset, an integrated management system for banks
 - Began providing Aerps, a specialized ERP solution for automotive parts manufacturers
- 2008** • Began providing AerpsMASTER for SAP's ERP systems
- 2009** • Established the Singapore Branch
- 2011** • Established local subsidiary in Shanghai, China
- 2012** • Opened an in-company nursery "INES Kids Club KOROPO NO MORI"
 - Established local subsidiary in Hong Kong, China
- 2013** • Announced the WebRings corresponding to resident service of the Social Security and Tax Number System
- 2017** • Established INES Research Institute, Inc.
 - Certified as top-rank "Eruboshi" company based on law promoting women's advancement
- 2018** • Announced a joint capital and business alliance with Mitsubishi Research Institute, Inc.
- 2019** • Established INES Integrated Service, Inc.
- 2022** • Transition to the Prime Market of the Tokyo Stock Exchange
- 2023** • Establish Yaesu Office in Yaesu, Chuo-ku, Tokyo.
- 2024** • Establish a headquarters in Nihonbashi Kakigara-cho, Chuo-ku, Tokyo.

Offices and Branches

Head Office

1-38-11, Nihonbashi Kakigara-cho, Chuo-ku, Tokyo, 103-0014
Tel. +81-3-6775-4401

Harumi Office

3-10-1, Harumi, Chuo-ku, Tokyo, 104-0053
Tel. +81-3-6864-3650

Yaesu Office

2-1-1, Yaesu, Chuo-ku, Tokyo, 104-0028
Tel. +81-3-6864-3550

Kanto Service Center

1-19-6, Minami-koshigaya, Koshigaya-shi, Saitama, 343-0845
Tel. +81-48-990-5900

Hokkaido Branch

9-3-33, Odori-nishi, Chuo-ku, Sapporo-shi, Hokkaido, 060-0042
Tel. +81-11-222-1302

Tohoku Branch

1-17-7, Kamisugi, Aoba-ku, Sendai-shi, Miyagi, 980-0011
Tel. +81-22-265-7401

North Kanto Branch

1-22-8 Nishi-ikebukuro, Toshima-ku, Tokyo, 171-0021
Tel. +81-50-1754-4704

Central Kanto Branch

1-22-8 Nishi-ikebukuro, Toshima-ku, Tokyo, 171-0021

South Kanto Branch

1-22-8 Nishi-ikebukuro, Toshima-ku, Tokyo, 171-0021
Tel. +81-50-1754-4703

Chubu Branch

1-17-23, Meiekininami, Nakamura-ku, Nagoya-shi, Aichi, 450-0003
Tel. +81-52-566-3001

Shizuoka Office

2-20, Oute-machi, Aoi-ku, Shizuoka-shi, Shizuoka, 420-0853
Tel. +81-54-653-2338

Kansai Branch

2-5-7, Hon-machi, Chuo-ku, Osaka-shi, Osaka, 541-0053
Tel. +81-6-6563-7850

Chugoku Branch

9-7, Wakakusa-cho, Higashi-ku, Hiroshima-shi, Hiroshima, 732-0053
Tel. +81-82-261-5301

Iwakuni Office

1-8-21, Imazu-cho, Iwakuni-shi, Yamaguchi, 740-0017
Tel. +81-827-23-2101

Kyushu Branch

2-19-24, Hakata-ekimae, Hakata-ku, Fukuoka-shi, Fukuoka, 812-0011
Tel. +81-92-233-6710

Singapore Branch

16 Raffles Quay, #27-04 Hong Leong Building, Singapore 048581

Subsidiaries and Affiliates

Domestic

INES Research Institute, Inc.

<https://iri.ines.co.jp/>

INES Relations Inc.

<https://irs.ines.co.jp/>

INES Technologies, Inc.

<https://iti.ines.co.jp/>

INES Integrated Service, Inc.

Overseas

INES Hong Kong Ltd.

Room A&B, 19/F, CKK Commercial Centre, No. 289 Hennessy Road, Wanchai, Hong Kong